

# LABOUR MARKET BRIEF

**July 2009**

*This brief is based on Statistics Canada's Labour Force Survey*

## **Labour Market Data (Seasonally Adjusted)**

### **NOVA SCOTIA (July 2009)**

**Labour Force ('000): 496.4**  
(June '09 =500.0)

**Employment ('000): 450.9**  
(June '09 =452.8)

**Unemployment: 45.5**  
(June '09 =47.2)

**Unemployment Rate: 9.2%**  
(June '09 = 9.4%)

**Participation Rate: 64.3%**  
(June '09 = 64.8%)

### **ALL PROVINCES (July 2009)**

	EMP. (‘000)	UNEMP. RATE
NL:	212.2	17.1%
PE:	69.2	12.3%
NS:	450.9	9.2%
NB:	364.9	9.4%
PQ:	3,821.9	9.0%
ON:	6,500.3	9.3%
MB:	607.9	5.2%
SK:	520.1	4.7%
AB:	1,985.8	7.2%
BC:	2,247.1	7.8%
CAN:	16,780.3	8.6%

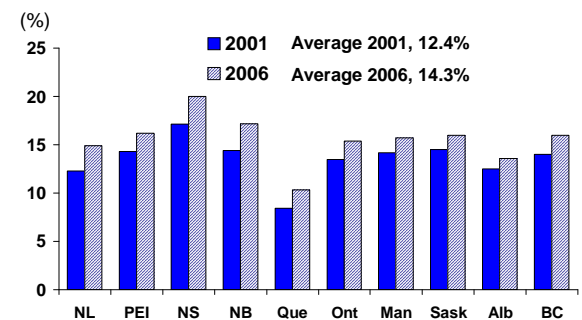
## **Labour Market deteriorates in July**

Employment declined by 1,900 in Nova Scotia between June and July. While losses occurred in both full- and part-time jobs, the majority of the decrease in employment was accounted for by a 1,600 decline in the number of people working full-time. On a month-over-month basis, the number of individuals in the labour force decreased by 3,600. Since the decrease in size of the labour force outpaced the decline in employment, the unemployment rate in Nova Scotia decreased between June and July. The unemployment rate now stands at 9.2%, down from 9.4% in June.

## **Prevalence of disability on the increase**

According to the 2006 Participation Activity Limitation Survey (PALS), 20% of the province's total population reported some form of disability in 2006. Between 2001 and 2006, the proportion of individuals reporting a disability increased by just under three percentage points in Nova Scotia. Nationally, 14.3% of Canadians reported having a disability in 2006, up from 12.4% five years earlier. In 2006, disability rates ranged from a low of 10.4% in Quebec to a high of 20% in Nova Scotia. Provinces in the east had, on average, higher disability rates than those in the west.

### **Prevalence of Disability in Canada**



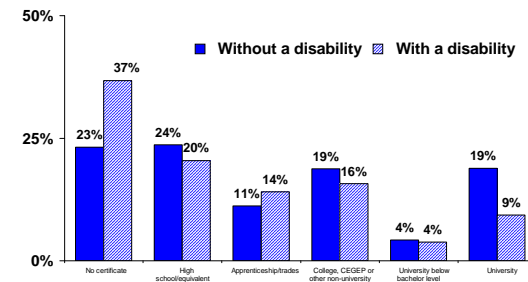
Source: Statistics Canada, PALS 2001, 2006

One factor contributing to the increase in disability rates is the aging of the population. Another is the increased social acceptance of reporting a disability.

## **A high percentage of PWDs have less than high school completion**

According to 2006 Census data, the proportion of Persons With Disabilities (PWDs) aged 15 and over in Nova Scotia with less than high school completion is significantly higher than their counterparts without a disability (37% versus 23%). Similarly, there is a large difference in the proportion of PWDs with a university degree and their non-disabled counterparts (9% versus 19%). When individuals aged 15-24 are excluded from the analysis, as many are still in school, the proportion of PWDs 25 years of age and over with less than high school completion remains virtually unchanged at 36%; whereas, 18% of their counterparts without a disability have this level of educational attainment.

### **Level of Educational Attainment, Nova Scotia 2006**



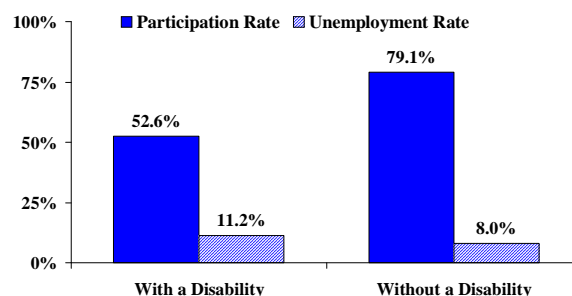
Source: Statistics Canada, Census 2006, Custom Tabulations

## Labour market attachment improves for PWDs

According to the 2006 PALS, approximately 53% of individuals aged 15-64 in Nova Scotia were in the labour force, up from 45% five years earlier. During the same period, the participation rates for individuals without a disability increased marginally from 77% to 79.2%. Data reports that 48,430 PWDs in this age category were employed in 2006, up from 34,370 or 41% from five years earlier. During the same period, the number of their non-disabled counterparts employed increased by just under 6%.

In 2006, the annual average unemployment rate for PWDs in Nova Scotia was 11.2%, which is slightly more than three percentage points higher than the rate for those without a disability. The unemployment rate for PWDs decreased by just under two percentage points between 2001 and 2006. The unemployment rate for the non-disabled in Nova Scotia was 8%, down from 11.6% five years earlier.

## Labour Market Status for Persons Aged 15-64, With and Without a Disability, Nova Scotia



Source: Statistics Canada, PALS 2006

## Employment income is lower for PWDs

In 2006, average employment income for PWDs in Nova Scotia was \$22,526 compared with \$30,641 for those without a disability. Despite the increase in participation rates and employment for PWDs, average employment income for PWDs decreased by close to \$3,800 between the two surveys; whereas, employment income increased by approximately \$1,000 for the non-disabled. Nationally, although employment income also decreased for PWDs, the decline (\$2,000) was smaller than that experienced in Nova Scotia.

## Disability and incidence of low income

According to the 2006 Census, 18.3% of PWDs in Nova Scotia aged 15 and over were living in low income situations in 2005, that is, below the poverty line. The incidence of low income decreases to 11.3% for individuals without a disability. Females, regardless of disability status, have a higher incidence of low income than males. In 2005, close to 21% of females with a disability were living in low income situations compared to 16% of males with a disability. By comparison, 13% of females without a disability were in low income situations, almost three percentage points higher than their male counterparts.

## Incidence of Low Income in Nova Scotia, 2005

	With a Disability	Without a Disability
Total - Population 15 years and over in private households	198,685	553,355
Low income	36,290	61,735
Incidence of low income in 2005	18.3%	11.3%

Source: Statistics Canada, Census 2006 Custom Tabulations

## Economic Region Highlights

### Economic Regional Data Three month moving averages (Ending July 2009)

Economic Region	Cape Breton		Northern		Valley		Southern		Halifax	
	2009	2008	2009	2008	2009	2008	2009	2008	2009	2008
Labour Force ('000)	64.8	66.6	80.9	82.2	62.0	64.8	65.3	65.3	235.1	222.8
Employed Full-time ('000)	47.5	50.1	61.2	64.3	47.7	49.6	48.7	48.4	183.4	174.6
Employed Part-time ('000)	8.3	9.3	10.5	11.3	9.5	11.1	10.5	11.7	36.2	35.2
Unemployed ('000)	9.0	7.2	9.3	6.6	4.8	4.2	6.1	5.2	15.4	12.9
Participation Rate (%)	56.3	57.6	61.6	62.6	61.0	64.2	63.2	63.0	73.2	70.3
Unemployment Rate (%)	13.9	10.8	11.5	8.0	7.7	6.5	9.3	8.0	6.6	5.8

Note: Data is not seasonally adjusted

Source: Statistics Canada's LFS

- Halifax added close to 9,000 jobs in July compared with July 2008. Employment gains were almost solely in full-time jobs. Since the labour force increased by a larger amount than employment, the unemployment rate increased.

- On a year-over-year basis, the unemployment rate in both the Cape Breton and Northern regions increased by over three percentage points in July.

- Modest gains in full-time employment in July, were not sufficient to offset a large decline in the number of part-time jobs in the Southern region. The labour market in the Valley region contracted in July compared to July 2008.

Detailed NS Economic Region data can be found at:

[www1.servicecanada.gc.ca/en/ns/lmi/lmb/index\\_lmb.shtml](http://www1.servicecanada.gc.ca/en/ns/lmi/lmb/index_lmb.shtml)

**Comments/Questions?** We'd like to hear from you!

Michael Rushe (902) 426-6606 [michael.rushe@servicecanada.gc.ca](mailto:michael.rushe@servicecanada.gc.ca) Randy Jewers (902) 426-5988 [randy.jewers@servicecanada.gc.ca](mailto:randy.jewers@servicecanada.gc.ca)