

LABOUR MARKET BRIEF

December 2009

This brief is based on Statistics Canada's Labour Force Survey

Labour Market Data (Seasonally Adjusted)

NOVA SCOTIA (December 2009)

Labour Force ('000): 499.9
(Nov '09 =502.3)

Employment ('000): 452.0
(Nov '09 =454.8)

Unemployment('000): 48.0
(Nov '09 =47.5)

Unemployment Rate: 9.6%
(Nov '09 = 9.5%)

Participation Rate: 64.5%
(Nov '09 = 64.9%)

ALL PROVINCES (December 2009)

	EMP. ('000)	UNEMP. RATE
NL:	217.0	15.7%
PE:	71.1	10.7%
NS:	452.0	9.6%
NB:	364.2	8.9%
PQ:	3,857.5	8.4%
ON:	6,523.6	9.3%
MB:	604.0	5.7%
SK:	521.8	4.8%
AB:	1,993.9	6.7%
BC:	2,266.4	8.4%
CAN:	16,871.3	8.5%

Labour Market Deteriorates

The labour market in Nova Scotia deteriorated from November to December. Employment decreased by 2,800 a month over month basis. This reflected a drop of 4,000 full time employees being partially offset by an increase of 1,200 part time workers. The labour force in Nova Scotia also decreased from November to December, falling by 2,400. With the fall in employment outpacing the drop in the labour force, the number of unemployed increased marginally (500), and the unemployment rate in Nova Scotia increased slightly from 9.5 percent in November to 9.6 percent in December.

Annual Average Employment falls in 2009

Annual average employment declined marginally in Nova Scotia from 2008 to 2009, falling by 400 or one tenth of a percentage point. This was the first annual decrease in the province since 2006.

The overall decrease reflected a drop of 1,100 part time workers which more than offset a rise of those working full time (700).

The decrease in employment on a year over year basis was found solely for Males, whose employment fell by 2,400.. This was offset to a large degree by an increase in Female employment of 2,000 over the same period.

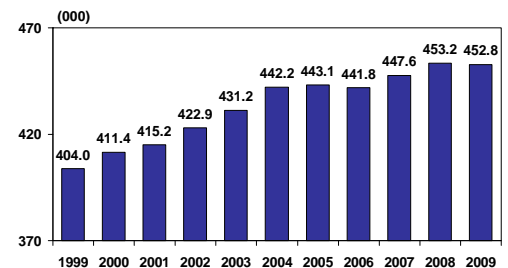
The weakening of employment in Nova Scotia was also concentrated in younger and prime age workers. Employment increased only for those aged 55+ , rising by 7,200 on a year over year basis.

Annual Average Employment drops for Goods Production

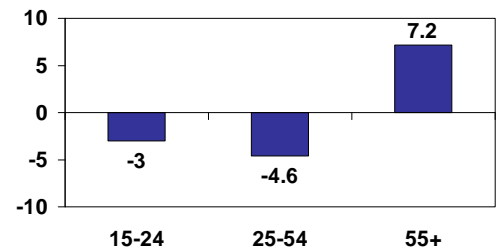
Employment fell by 5,900 for Goods Producing industries from 2008 to 2009. The declines were concentrated in Manufacturing (-5,300), Forestry (-1,100) and Construction (-900).

Conversely, employment increased over the same period for Service industries (5,500), with significant increases evident for Educational Services (3,800), and Health Care (2,200). Several Service industries declined from 2008 to 2009, including Trade (-2,600) and Business Services (including Call Centres) (-2,500).

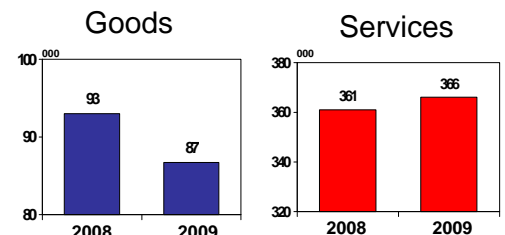
Employment in Nova Scotia
Annual Averages



Annual Average Employment
Change by Age – 2008-2009 NS



Annual Average Employment
by Industry 2008-2009 NS



The LABOUR MARKET BRIEF is a publication of the Labour Market & Skills Development Branch, Service Canada - Nova Scotia-Prince Edward Island Region.

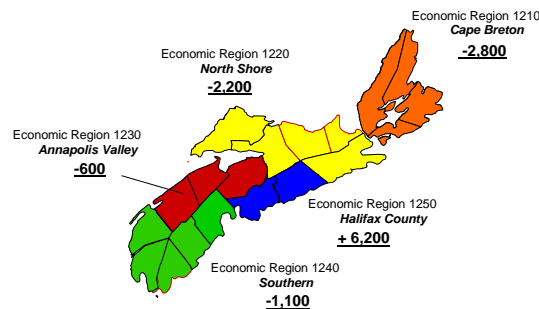
Annual Average Employment increases in Halifax

The only region in the province where employment increased from 2008 to 2009 was Halifax County (6,200). All other regions in the province experienced a year over year decrease in employment, ranging from -2,800 in Cape Breton to -600 in the Annapolis Valley.

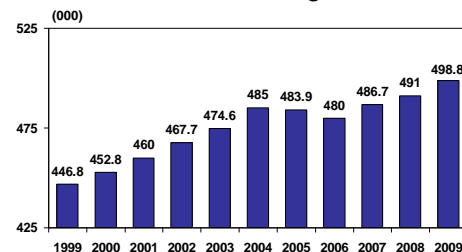
The employment increase in Halifax was heavily concentrated in Educational Services, while a significant decline was evident for Business Support Services (including Call Centres).

A notable change in employment by industry was in Northern Nova Scotia, which experienced a sharp drop in Manufacturing employment on a year over year basis.

Annual Average Employment Change 2008-2009 By Economic Region - NS



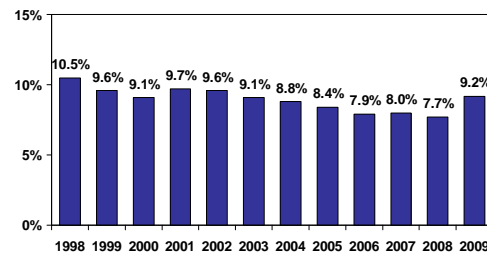
Labour Force in Nova Scotia Annual Averages



Annual Average Labour Force continues to increase in NS

Although employment weakened in 2009, the labour force continued to grow on a year over year basis in the province, and reached a historic high of 498,800. The increase in the labour force was comprised heavily of females (close to two-thirds of the overall increase) and was made up largely of older (55+) labour market participants.

Unemployment Rate in Nova Scotia Annual Averages



Annual Average Unemployment Rate increases in NS

The annual average unemployment for the province increased noticeably from 2008 to 2009, rising by 1.5 percentage points. This was the largest increase in the unemployment rate in at least a decade and is comparable to the rise from 1997 to 1998 (1.4 percentage points).

Following the annual changes in the labour force and employment from 2008 to 2009, the annual average unemployment rate increased noticeably for younger workers aged 15-24 (3.8 percentage points) on a year over year basis, as well as for Males (1.9 percentage points) compared to Females (1.1 percentage points).

Economic Region Highlights- December 2009

Economic Region Data										
Three month Moving Averages (ending December 2009)										
Economic Region	Cape Breton		Northern		Valley		Southern		Halifax	
Year	2008	2009	2008	2009	2008	2009	2008	2009	2008	2009
Labour Force (000)	64.0	63.3	80.0	80.4	61.7	62.9	60.6	60.9	225.0	230.2
Employed (000)	55.5	54.3	73.5	72.2	57.2	57.5	54.8	54.0	214.7	216.7
Full Time	43.3	42.2	59.7	59.1	45.9	46.9	44.2	43.0	175.3	177.2
Part Time	12.1	12.1	13.8	13.0	11.3	10.7	10.6	11.1	39.4	39.5
Unemployed (000)	8.5	9.0	6.5	8.3	4.5	5.4	5.8	6.9	10.2	13.5
Participation Rate (%)	55.4	55.2	60.9	61.2	60.8	61.7	58.6	59.0	70.6	71.3
Unemployment Rate (%)	13.3	14.2	8.1	10.3	7.3	8.6	9.6	11.3	4.5	5.9

- The labour force in Halifax increased significantly from December 2008 to December 2009, rising by 5,200. Employment rose by 2,000 over the same period. Correspondingly, the unemployment level and rate increased noticeably on a year over year basis.
- The labour force rose by 1,200 in the Valley region while employment increased by 300. With labour force growth outpacing employment growth, the unemployment level and rate rose in the region.
- Employment fell in the remaining regions from December 2008 to December 2009, while the unemployment rate increased for these areas as well over the same time period.

Detailed NS Economic Region data can be found at: www1.servicecanada.gc.ca/en/ns/lmi/lmb/index_lmb.shtml

Comments/Questions?

Randy Jewers (902) 426-5988
randy.jewers@servicecanada.gc.ca

