

LABOUR MARKET BRIEF

Based on Statistics Canada's Labour Force Survey

November 2007

Labour Market Data (Seasonally Adjusted)

NOVA SCOTIA (November 2007)

Labour Force ('000): 488.8
(Oct '07 = 487.5)

Employment ('000): 449.5
(Oct '07 = 450.3)

Unemployment: 39.3
(Oct '07 = 37.2)

Unemployment Rate: 8.0%
(Oct '07 = 7.6%)

Participation Rate: 63.9%
(Oct '07 = 63.7%)

ALL PROVINCES (November 2007)

	EMP. ('000)	UNEMP. RATE
NL:	217.3	13.2%
PE:	68.3	11.2%
NS:	449.5	8.0%
NB:	369.1	7.2%
PQ:	3,892.9	7.0%
ON:	6,651.1	6.2%
MB:	604.8	4.2%
SK:	507.4	4.0%
AB:	1,970.0	3.6%
BC:	2,298.4	4.2%
CAN:	17,028.6	5.9%

The **LABOUR MARKET BRIEF** is a publication of the Research & Analysis branch, Service Canada - Nova Scotia Region.

Labour market changes little in November

The labour market in Nova Scotia remained relatively stable from October to November. The provincial labour force grew slowly (0.3 percent) this month, a significant change from the rapid increase experienced in the previous month. Employment in Nova Scotia dropped marginally from October to November (0.2 percent) following significant growth from September to October. With a small increase in the labour force and a slightly weakened level of employment, seasonally adjusted unemployment increased in Nova Scotia by 5.6 percent (2,100). The unemployment rate in Nova Scotia increased from 7.6 percent in October to 8.0 percent in November, reversing a decrease of the same magnitude in the previous month.

Net outflow of taxfilers from NS decreases

One source of migration data in Canada is Statistics Canada's Small Area Administrative Data (SAAD). This source of migration data is based on the annual filing location of Revenue Canada taxation forms. It should be noted it is a completely different data source than for the recently released Census migration data.

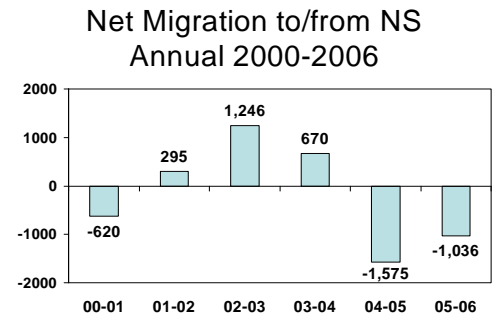
According to the SAAD, the net outflow of taxfilers from Nova Scotia dropped for the period 2005-2006 compared to 2004-2005. The net outflow was smaller by over 500 individuals, or just over one third, between the two periods.

Net migration of taxfilers increases to Alberta

The change in the migration patterns of taxfilers to and from Nova Scotia reflects several interesting developments.

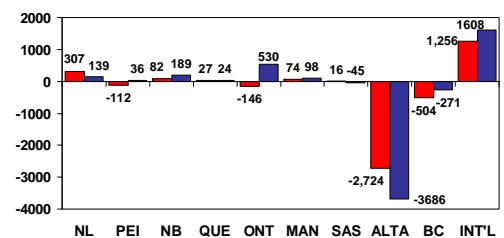
A predominant influence on the net migration flows has been continued growth in the net outflow to Alberta, which increased by almost 1,000 from 2004/2005 to 2005/2006.

The larger net outflow to Alberta, however, has been partially offset by significant improvements in net in migration flows between Nova Scotia and Ontario (going from negative to strongly positive) as well as net in migration from international sources, and a decrease in the net outflow to British Columbia.



Stats Can Small Area Data

Net Migration to/from NS 2004-2005 and 2005/2006



Stats Can Small Area Data

Nova Scotia Youth out migration increases

Although the net out migration overall from Nova Scotia dropped comparing 2004-2005 with 2005-2006, the net outflows of youth aged 18-24 increased significantly over the two periods. Last year the net outflow of youth was over 1,300, an increase of almost 60 percent from the previous period.

Although data by age and destination is not readily available from the SAAD, it is interesting to note that only Alberta had any significant increase in net in migration of youth - increasing almost 40 percent (or roughly 4,500) from 2004-2005 to 2005-2006.

Migration Flows improve for 25-44 year old taxfilers

In 2004-2005, Nova Scotia experienced a net loss of 25-44 year old workers, the first net decrease since the beginning of the decade. In 2005-2006, the province still experienced a net outflow for this age category (which is representative of prime age workers), however this net outflow was less than one half of that experienced in 2004-2005.

Not surprisingly, Alberta experienced the largest increase in net inflow of 25-44 year old migrants over the two periods, increasing by almost 6,000 (or over 25 percent) from 2004-2005 to 2005-2006.

Halifax, Cape Breton Counties lead migration to Alberta

Overall, net out migration of taxfilers from Nova Scotia to Alberta has been increasing steadily in recent years, and has more than tripled since 2003-2004.

The leading areas that are contributing most to this large net outflow are Halifax County and Cape Breton County, which together comprise over 50 percent of the total net outflow.

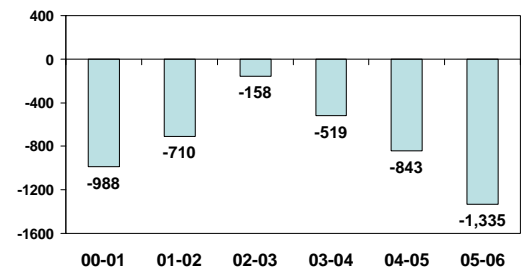
Increases in net outflows to Alberta over the three year period were also notable for Kings, Pictou, Antigonish and Inverness Counties.

Out migration of tax filers to Ontario eases

Traditionally, Ontario has been a major draw for out migrants from Nova Scotia. However, in the last several years out migration to Ontario has slowed and the net flow has actually reversed (net inflow of over 600) in 2005-2006.

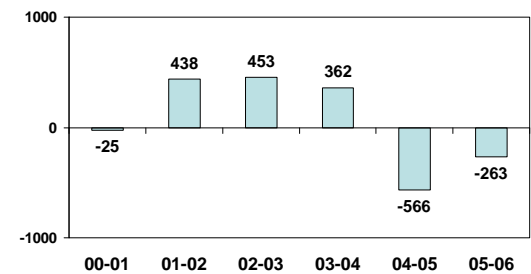
Halifax County has been the primary recipient of the inflow from Ontario, reversing a net outflow from 2003-2004 to 2004-2005. Other areas experiencing notable net inflows of migrants from Ontario include Lunenburg, Cape Breton, Cumberland and Pictou Counties.

Net Migration to/from NS - Aged 18-24
Annual 2000-2006



Stats Can Small Area Data

Net Migration to/from NS - Aged 25-44
Annual 2000-2005



Stats Can Small Area Data

Net Migration Flows to Alberta from Nova Scotia

County	2003-2004	2004-2005	2005-2006
NOVA SCOTIA	-1074	-2724	-3686
SHELBURNE COUNTY	-4	-37	-89
YARMOUTH COUNTY	-5	-5	-70
DIGBY COUNTY	-19	-30	-102
QUEENS COUNTY	-15	-29	-35
ANNAPOLIS COUNTY	2	-19	-115
LUNENBURG COUNTY	-24	-75	-82
KINGS COUNTY	-99	-245	-238
HANTS COUNTY	-45	-116	-97
HALIFAX COUNTY	-474	-1201	-1298
COLCHESTER COUNTY	-53	-116	-188
CUMBERLAND COUNTY	-22	-78	-102
PICTOU COUNTY	-33	-164	-306
GUYSBOROUGH COUNTY	-27	-24	-61
ANTIGONISH COUNTY	-31	-111	-122
INVERNESS COUNTY	-21	-61	-153
RICHMOND COUNTY	-19	-21	-22
CAPE BRETON COUNTY	-167	-348	-559
VICTORIA COUNTY	-18	-44	-47

Stats Canada Small Area Data

Net Migration Flows to Ontario from Nova Scotia

County	2003-2004	2004-2005	2005-2006
NOVA SCOTIA	194	-146	530
SHELBURNE COUNTY	16	1	15
YARMOUTH COUNTY	4	-18	-14
DIGBY COUNTY	39	23	13
QUEENS COUNTY	25	-4	12
ANNAPOLIS COUNTY	19	79	5
LUNENBURG COUNTY	78	75	92
KINGS COUNTY	55	61	52
HANTS COUNTY	9	-69	-32
HALIFAX COUNTY	-145	-506	182
COLCHESTER COUNTY	0	8	-50
CUMBERLAND COUNTY	39	76	75
PICTOU COUNTY	23	-1	75
GUYSBOROUGH COUNTY	-1	10	22
ANTIGONISH COUNTY	7	21	-19
INVERNESS COUNTY	20	-10	12
RICHMOND COUNTY	10	10	6
CAPE BRETON COUNTY	-11	87	78
VICTORIA COUNTY	7	11	6

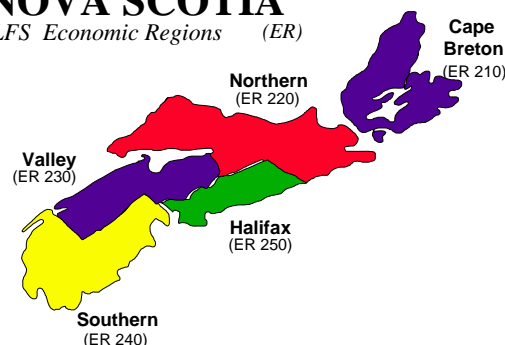
Stats Canada Small Area Data

Economic Region Synopsis

NOVA SCOTIA
LFS Economic Regions (ER)

Three Month Moving Average

Employment up across the region except in Cape Breton



Strong employment growth in Halifax

The size of the labour force in the **Halifax** region increased in November 2007 by 5,900 compared with November 2006 while employment levels increased by 5,100. The majority of the job gains were in part-time employment (+2,900). Employment levels in the Goods sector increased by 2,600 in November compared with the same period last year, with the largest employment gains in Construction industries. Service sector employment increased by 2,500 during the same period, led by gains in Professional, Scientific and Technical Services; Information, Culture and Recreation, and Other Services. As gains in employment lagged those of the labour force, the unemployment rate edged up slightly from 4.3 percent for the month of November last year to reach 4.5 percent in November this year.

Labour market continues to weaken in Cape Breton

The size of the labour force and the number employed in the **Cape Breton** region in November 2007 decreased by 2,900 and 2,800, respectively, compared to November 2006. All of the job losses were in full-time positions. The number of people currently working in the Goods sector was approximately 3,100 lower than in November 2006 - employment was down across every industry in the Goods sector. By comparison, there were some gains in the Service-producing sector (+500) primarily led by employment gains in Professional, Scientific and Technical Services; Information and in Culture; and Recreation industries. The unemployment rate increased between November 2006 and 2007 by just under half a percentage point and currently stands at 11.8 percent.

Full-time employment up in Southern region

Compared with November 2006, there was a slight increase in the size of the labour force (100) and the number employed in the **Southern** region increased by 1,400. Full-time employment increased by 3,200 in the region while part-time employment decreased by 1,900 compared with November 2006. The number of people employed in the Goods sector was down by 800 compared with November 2006, employment declines in the Primary industries are responsible for the lower level this year. Service sector employment is up by 2,000 on a year-over-year basis. Business, Building and Other Support Services; Professional, Scientific and Technical Services; and Transportation and Warehousing all contributed to employment gains in the Service sector in November 2007. The unemployment rate decreased from 11.1 percent in November 2006 and now stands at 9 percent – the lowest level in the Southern region for the month of November since 1990.

Employment numbers up in the Valley

In November, there were approximately 3,600 more people in the labour force and 2,100 additional people employed in the **Valley** region compared with this time last year. The majority of the job gains were in part-time employment (+1,400). Goods-sector employment increased by 1,900, due largely to an improvement in employment in the Primary and Manufacturing sectors. In the Service sector employment also increased (+200). The unemployment rate increased from 7.3 percent last year to 8.1 percent in November 2007.

Employment gains in the Goods-sector in the Northern region

In November, the size of the labour force in the **Northern** region was approximately 800 lower than its November 2006 level. However, there were 500 additional people employed in the region compared with November 2006. Employment losses in full-time jobs (-600) was more than offset by an additional 1,100 part-time positions. Employment increased in the Goods sector by 2,800 compared with November 2006 with the largest employment gains in Construction and Manufacturing industries. By comparison, employment declines in the Service-producing sector (-2,500) partially offset the gains made in Goods-producing industries. Decreases in employment in Accommodation and Food Services and Other Services were responsible for majority of the job losses in the Service sector. The unemployment rate reached 9.3 percent in November 2007, up from 9.1 percent in November 2006.

Economic Region Data	Three Month Moving Average (Ending November 2007)					
	<i>Economic Region</i>	CB	Northern	Valley	Southern	Halifax
Population 15+ ('000)	116.0	131.0	100.5	103.5	314.1	765.1
Labour Force ('000)	61.0	79.6	63.1	61.1	220.7	485.5
Employed ('000)	53.8	72.2	57.9	55.6	210.7	450.2
Unemployed ('000)	7.2	7.4	5.2	5.5	10.0	35.3
Part. Rate (%)	52.6	60.8	62.8	59.0	70.3	63.5
Unemp. Rate (%)	11.8	9.3	8.2	9.0	4.5	7.3

Note: Data is not seasonally adjusted.

Source: Statistics Canada's LFS

For more information or additional copies, please contact . . .


Service Canada
 Michael Rushe
 Economist
 Research and Analysis
 99 Wyse Road, PO Box 1350
 Dartmouth, Nova Scotia B2Y 4B9
 Telephone: (902) 426-6606 Fax: (902) 426-1840
 E-mail: michael.rushe@servicecanada.gc.ca



Service Canada
 Randy Jewers
 Economist
 Research and Analysis
 99 Wyse Road, PO Box 1350
 Dartmouth, Nova Scotia B2Y 4B9
 Telephone: (902) 426-5988 Fax: (902) 426-1840
 E-mail: randy.jewers@servicecanada.gc.ca




The staff of the Nova Scotia Research and Analysis unit of Service Canada would like to take this opportunity to extend our warmest wishes to all our readers during this festive holiday season.